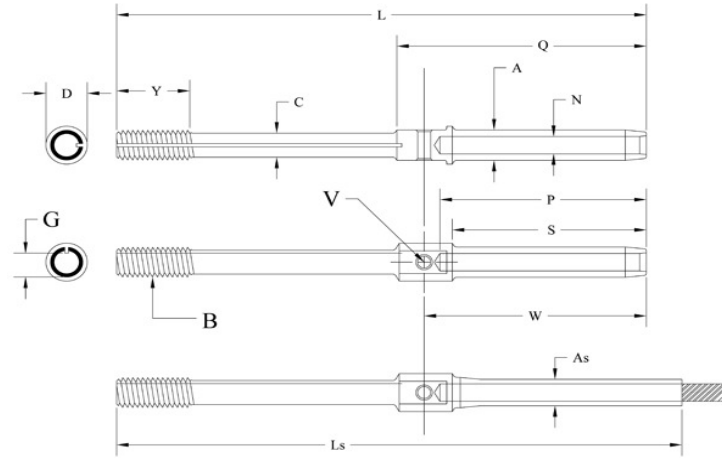


MS21260 LOCKING STUD



MS Part Number RH Thread	MS Part Number LH Thread	Cable Diameter	Thread B UN-3A UNF-3A	A Diameter	As Diameter	C +.006 -.000 Diameter	D	G Max.	G Min.
MS21260L2RH	MS21260L2LH	1/16"	(#6)-40	0.16	0.138	0.092	0.188	0.1139	0.1094
MS21260S2RH	MS21260S2LH	1/16"	(#6)-40	0.16	0.138	0.092	0.188	0.1139	0.1094
MS21260L3RH	MS21260L3LH	3/32"	(#10)-32	0.218	0.19	0.133	0.25	0.1638	0.1568
MS21260S3RH	MS21260S3LH	3/32"	(#10)-32	0.218	0.19	0.133	0.25	0.1638	0.1568
MS21260L4RH	MS21260L4LH	1/8"	(1/4)-28	0.25	0.219	0.195	0.313	0.2224	0.2152
MS21260S4RH	MS21260S4LH	1/8"	(1/4)-28	0.25	0.219	0.195	0.313	0.2224	0.2152
MS21260L5RH	MS21260L5LH	5/32"	(1/4)-28	0.297	0.25	0.195	0.313	0.2224	0.2152
MS21260S5RH	MS21260S5LH	5/32"	(1/4)-28	0.297	0.25	0.195	0.313	0.2224	0.2152
MS21260L6RH	MS21260L6LH	3/16"	(5/16)-24	0.359	0.313	0.245	0.375	0.283	0.2754
MS21260S6RH	MS21260S6LH	3/16"	(5/16)-24	0.359	0.313	0.245	0.375	0.283	0.2754

Dash Number Size	L ±.063	Ls (Ref)	N Diameter	P	Q +.031 -.016	V ±.005	S +.062 -.000	W	Y ±.047
L2	3.491	3.67	0.078	1.042	1.319	0.063	0.969	1.174	0.375
S2	2.616	2.79	0.078	1.042	1.319	0.063	0.969	1.174	0.375
L3	3.738	3.86	0.109	1.261	1.581	0.063	1.188	1.411	0.5
S3	2.863	2.98	0.109	1.261	1.581	0.063	1.188	1.411	0.5
L4	4.02	4.28	0.141	1.511	1.863	0.098	1.438	1.682	0.563
S4	3.145	3.4	0.141	1.511	1.863	0.098	1.438	1.682	0.563
L5	4.314	4.66	0.172	1.761	2.157	0.098	1.688	1.958	0.625
S5	3.439	3.78	0.172	1.761	2.157	0.098	1.688	1.958	0.625
L6	4.612	4.78	0.203	2.011	2.455	0.098	1.938	2.237	0.75
S6	3.737	3.9	0.203	2.011	2.455	0.098	1.938	2.237	0.75