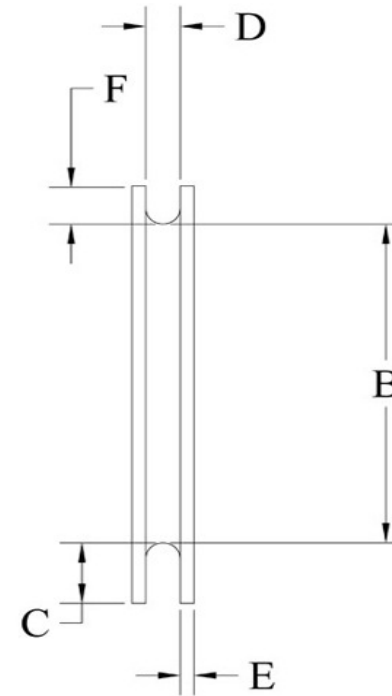
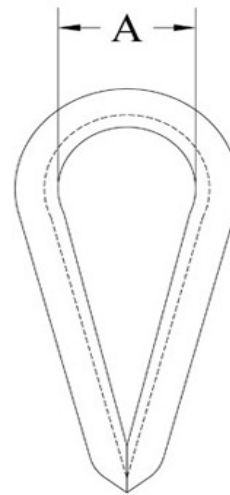


**AN100-C THIMBLE**



Part Number (Stainless Steel)	To fit Cable Diameter	A	B	C	D	E	F
AN100-C3	1/16", 3/32"	0.35	43/64"	3/61"	3/32"	0.032	5/64"
AN100-C4	3/32", 1/8"	0.35	45/64"	7/32"	9/64"	0.032	5/64"
AN100-C5	5/32"	0.4	51/64"	7/32"	11/64"	0.032	7/64"